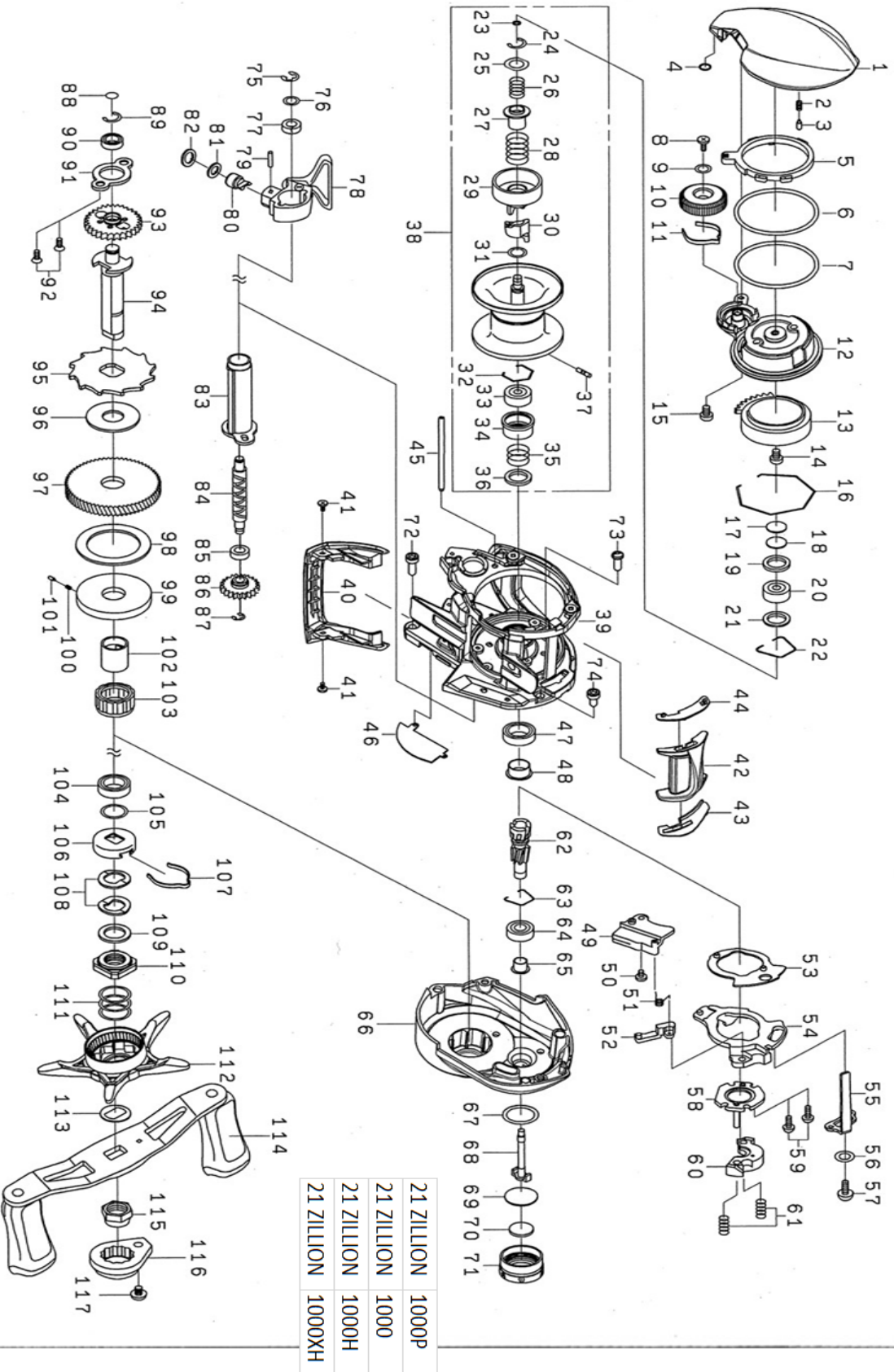




21 ZILLION SV (G) TW100

Feel Alive.

Please quote by part number, not key number when ordering.
 spares@daiwaaustralia.com.au PH: (02) 8644 8644



| | |
|------------|--------|
| 21 ZILLION | 1000P |
| 21 ZILLION | 1000 |
| 21 ZILLION | 1000H |
| 21 ZILLION | 1000XH |

| REEL NAME | MGFT CODE | KEY NO | PARTS CODE | DESCRIPTION |
|-------------------------|-----------|--------|------------|-----------------------------------|
| 21 ZILLION SV (G) TW100 | | 1 | 6M067001 | LEFT SIDE PLATE |
| 21 ZILLION SV (G) TW100 | | 2 | 6J631901 | LEVER PLATE SPRING |
| 21 ZILLION SV (G) TW100 | | 3 | 6J286301 | LEVER PLATE PIN |
| 21 ZILLION SV (G) TW100 | | 4 | 6J197901 | LEFT SIDE PLATE O RING |
| 21 ZILLION SV (G) TW100 | | 5 | 6M067401 | LEVER PLATE (A) |
| 21 ZILLION SV (G) TW100 | | 6 | 6J286101 | LEVER PLATE (B) |
| 21 ZILLION SV (G) TW100 | | 7 | 6J645201 | LEVER PLATE (C) |
| 21 ZILLION SV (G) TW100 | | 8 | 6G940402 | BRAKE DIAL SCREW |
| 21 ZILLION SV (G) TW100 | | 9 | 6H159201 | BRAKE DIAL WASHER |
| 21 ZILLION SV (G) TW100 | | 10 | 6M053602 | BRAKE DIAL |
| 21 ZILLION SV (G) TW100 | | 11 | 6H663401 | BRAKE DIAL SPRING |
| 21 ZILLION SV (G) TW100 | | 12 | 6M067201 | SET PLATE |
| 21 ZILLION SV (G) TW100 | | 13 | 6M054701 | MAGNET HOLDER |
| 21 ZILLION SV (G) TW100 | | 14 | 6H666002 | SET PLATE SCREW (A) |
| 21 ZILLION SV (G) TW100 | | 15 | 6G939303 | SET PLATE SCREW (B) |
| 21 ZILLION SV (G) TW100 | | 16 | 6J315701 | MAGNET HOLDER RETAINER |
| 21 ZILLION SV (G) TW100 | | 17 | 63757404 | LS SPOOL ADJUST WASHER (A) |
| 21 ZILLION SV (G) TW100 | | 18 | 63757411 | LS SPOOL ADJUST WASHER (B) |
| 21 ZILLION SV (G) TW100 | | 19 | 6G185101 | LS SPOOL ADJUST WASHER (C) |
| 21 ZILLION SV (G) TW100 | | 20 | 6G511503 | LS BALL BEARING |
| 21 ZILLION SV (G) TW100 | | 21 | 6G703201 | LS BALL BEARING O RING |
| 21 ZILLION SV (G) TW100 | | 22 | 6F032201 | LS BALL BEARING RETAINER |
| 21 ZILLION SV (G) TW100 | | 23 | 6H770601 | SPOOL SHAFT O RING |
| 21 ZILLION SV (G) TW100 | | 24 | 63208002 | BRAKE CUP SPRING RETAINER |
| 21 ZILLION SV (G) TW100 | | 25 | 6J497001 | BRAKE CUP SPRING WASHER |
| 21 ZILLION SV (G) TW100 | | 26 | 6M042201 | BRAKE CUP SPRING (A) |
| 21 ZILLION SV (G) TW100 | | 27 | 6M165701 | BRAKE CUP COLLAR (A) |
| 21 ZILLION SV (G) TW100 | | 28 | 6M042001 | BRAKE CUP SPRING (B) |
| 21 ZILLION SV (G) TW100 | | 29 | 6M055001 | BRAKE CUP |
| 21 ZILLION SV (G) TW100 | | 30 | 6M041701 | BRAKE CUP COLLAR (B) |
| 21 ZILLION SV (G) TW100 | | 31 | 63755202 | BRAKE CUP WASHER |
| 21 ZILLION SV (G) TW100 | | 32 | 6J149501 | SPOOL BALL BEARING RETAINER |
| 21 ZILLION SV (G) TW100 | | 33 | 6G511503 | SPOOL BALL BEARING |
| 21 ZILLION SV (G) TW100 | | 34 | 6H232201 | SPOOL BALL BEARING COLLAR |
| 21 ZILLION SV (G) TW100 | | 35 | 6M052601 | SPOOL BALL BEARING SPRING |
| 21 ZILLION SV (G) TW100 | | 36 | 6M052501 | SPOOL BALL BEARING WASHER |
| 21 ZILLION SV (G) TW100 | | 37 | 6H358801 | SPOOL PIN |
| 21 ZILLION SV (G) TW100 | | 38 | 6Z025976 | SPOOL ASSY |
| 21 ZILLION SV (G) TW100 | | 39 | 6M207501 | FRAME |
| 21 ZILLION SV (G) TW100 | | 40 | 6M041001 | FRONT COVER |
| 21 ZILLION SV (G) TW100 | | 41 | 6H531508 | FRONT COVER SCREW |
| 21 ZILLION SV (G) TW100 | | 42 | 6M066101 | CLUTCH LEVER |
| 21 ZILLION SV (G) TW100 | | 43 | 6M065401 | CLUTCH LEVER PLATE (R) |
| 21 ZILLION SV (G) TW100 | | 44 | 6M065501 | CLUTCH LEVER PLATE (L) |
| 21 ZILLION SV (G) TW100 | | 45 | 6M041101 | STABILIZER BAR |
| 21 ZILLION SV (G) TW100 | | 46 | 6M065601 | FRAME PLATE |
| 21 ZILLION SV (G) TW100 | | 47 | 6G431004 | PINION BALL BEARING (A) |
| 21 ZILLION SV (G) TW100 | | 48 | 6J764501 | PINION BALL BEARING (A) COLLAR |
| 21 ZILLION SV (G) TW100 | | 49 | 6M066001 | CLUTCH TRIP LEVER PLATE (A) |
| 21 ZILLION SV (G) TW100 | | 50 | 6H531508 | CLUTCH TRIP LEVER PLATE (A) SCREW |
| 21 ZILLION SV (G) TW100 | | 51 | 6M066301 | CLUTCH TRIP LEVER PLATE SPRING |
| 21 ZILLION SV (G) TW100 | | 52 | 6J622901 | CLUTCH TRIP LEVER |
| 21 ZILLION SV (G) TW100 | | 53 | 6M065901 | CLUTCH CAM PLATE (A) |
| 21 ZILLION SV (G) TW100 | | 54 | 6M065701 | CLUTCH CAM |
| 21 ZILLION SV (G) TW100 | | 55 | 6M065801 | CLUTCH BAR |
| 21 ZILLION SV (G) TW100 | | 56 | 6M070001 | CLUTCH BAR WASHER |
| 21 ZILLION SV (G) TW100 | | 57 | 6B360406 | CLUTCH BAR SCREW |
| 21 ZILLION SV (G) TW100 | | 58 | 6H659101 | CLUTCH CAM PLATE (B) |
| 21 ZILLION SV (G) TW100 | | 59 | 6B032904 | CLUTCH CAM PLATE (B) SCREW |
| 21 ZILLION SV (G) TW100 | | 60 | 6M157601 | YOKE |

| REEL NAME | MGFT CODE | KEY NO | PARTS CODE | DESCRIPTION |
|-------------------------|-----------|--------|------------|--------------------------------|
| 21 ZILLION SV (G) TW100 | | 61 | 6J313901 | YOKE SPRING |
| 21 ZILLION SV (G) TW100 | | 62 97 | 6Z025981 | PINION DRIVE GEAR SET |
| 21 ZILLION SV (G) TW100 | | 63 | 6H448401 | PINION BALL BEARING RETAINER |
| 21 ZILLION SV (G) TW100 | | 64 | 6B358608 | PINION BALL BEARING (B) |
| 21 ZILLION SV (G) TW100 | | 65 | 6J724601 | PINION BALL BEARING (B) COLLAR |
| 21 ZILLION SV (G) TW100 | | 66 | 6M166301 | RIGHT SIDE PLATE |
| 21 ZILLION SV (G) TW100 | | 67 | 6J279701 | ZERO ADJUSTER KNOB O RING |
| 21 ZILLION SV (G) TW100 | | 68 | 6G931001 | PINION SHAFT |
| 21 ZILLION SV (G) TW100 | | 69 | 6H161001 | ZERO ADJUSTER WASHER (A) |
| 21 ZILLION SV (G) TW100 | | 70 | 6B175503 | ZERO ADJUSTER WASHER (B) |
| 21 ZILLION SV (G) TW100 | | 71 | 6J279601 | ZERO ADJUSTER KNOB |
| 21 ZILLION SV (G) TW100 | | 72 | 6G945811 | RIGHT SIDE PLATE SCREW (A) |
| 21 ZILLION SV (G) TW100 | | 73 | 6G040802 | RIGHT SIDE PLATE SCREW (B) |
| 21 ZILLION SV (G) TW100 | | 74 | 6G945818 | RIGHT SIDE PLATE SCREW (C) |
| 21 ZILLION SV (G) TW100 | | 75 | 63205901 | WORM SHAFT RETAINER |
| 21 ZILLION SV (G) TW100 | | 76 | 6B411703 | WORM SHAFT WASHER |
| 21 ZILLION SV (G) TW100 | | 77 | 6G720001 | WORM SHAFT BUSHING (A) |
| 21 ZILLION SV (G) TW100 | | 78 | 6M054201 | LEVELWIND |
| 21 ZILLION SV (G) TW100 | | 79 | 6J740201 | LEVELWIND PIN |
| 21 ZILLION SV (G) TW100 | | 80 | 6J740101 | PAWL |
| 21 ZILLION SV (G) TW100 | | 81 | 6M161301 | PAWL WASHER |
| 21 ZILLION SV (G) TW100 | | 82 | 6G252202 | PAWL O RING |
| 21 ZILLION SV (G) TW100 | | 83 | 6M066601 | WORM SHIELD |
| 21 ZILLION SV (G) TW100 | | 84 | 6J243601 | WORM SHAFT |
| 21 ZILLION SV (G) TW100 | | 85 | 6G720001 | WORM SHAFT BUSHING (B) |
| 21 ZILLION SV (G) TW100 | | 86 | 6M048801 | WORM GEAR |
| 21 ZILLION SV (G) TW100 | | 87 | 6B339801 | WORM GEAR RETAINER |
| 21 ZILLION SV (G) TW100 | | 88 | 6G099801 | DRIVE SHAFT WASHER |
| 21 ZILLION SV (G) TW100 | | 89 | 63208002 | DRIVE SHAFT RETAINER |
| 21 ZILLION SV (G) TW100 | | 90 | 6G466202 | DRIVE SHAFT BALL BEARING |
| 21 ZILLION SV (G) TW100 | | 91 | 6J281101 | DRIVE SHAFT PLATE |
| 21 ZILLION SV (G) TW100 | | 92 | 6G297002 | DRIVE SHAFT PLATE SCREW |
| 21 ZILLION SV (G) TW100 | | 93 | 6M048601 | DRIVE SHAFT GEAR |
| 21 ZILLION SV (G) TW100 | | 94 | 6M048502 | DRIVE SHAFT |
| 21 ZILLION SV (G) TW100 | | 95 | 6H660901 | RATCHET |
| 21 ZILLION SV (G) TW100 | | 96 | 6E708901 | DRIVE GEAR WASHER |
| 21 ZILLION SV (G) TW100 | | 62 97 | 6Z025981 | PINION DRIVE GEAR SET |
| 21 ZILLION SV (G) TW100 | | 98 | 6H359001 | DRAG WASHER |
| 21 ZILLION SV (G) TW100 | | 99 | 6J740501 | KEY WASHER |
| 21 ZILLION SV (G) TW100 | | 100 | 6M025201 | DRAG CLICK SPRING |
| 21 ZILLION SV (G) TW100 | | 101 | 6J566201 | DRAG CLICK PIN |
| 21 ZILLION SV (G) TW100 | | 102 | 6G011401 | ONEWAY CLUTCH COLLAR |
| 21 ZILLION SV (G) TW100 | | 103 | 6J540401 | ONEWAY CLUTCH |
| 21 ZILLION SV (G) TW100 | | 104 | 6B861704 | HANDLE BALL BEARING |
| 21 ZILLION SV (G) TW100 | | 105 | 6B553801 | HANDLE BEARING WASHER |
| 21 ZILLION SV (G) TW100 | | 106 | 6F028203 | CLICK SPRING HOLDER |
| 21 ZILLION SV (G) TW100 | | 107 | 6F032401 | CLICK LEAF SPRING |
| 21 ZILLION SV (G) TW100 | | 108 | 61508901 | DRAG SPRING WASHER |
| 21 ZILLION SV (G) TW100 | | 109 | 6H929501 | STAR DRAG WASHER |
| 21 ZILLION SV (G) TW100 | | 110 | 6J141001 | STAR DRAG METAL |
| 21 ZILLION SV (G) TW100 | | 111 | 6J011901 | STAR DRAG SPRING |
| 21 ZILLION SV (G) TW100 | | 112 | 6J140005 | STAR DRAG |
| 21 ZILLION SV (G) TW100 | | 113 | 6F576601 | HANDLE PLATE |
| 21 ZILLION SV (G) TW100 | | 114 | 6M125001 | HANDLE ASSEMBLY |
| 21 ZILLION SV (G) TW100 | | 115 | 6G793309 | HANDLE NUT |
| 21 ZILLION SV (G) TW100 | | 116 | 6J625401 | HANDLE LOCK PLATE |
| 21 ZILLION SV (G) TW100 | | 117 | 6G835503 | HANDLE LOCK PLATE SCREW |